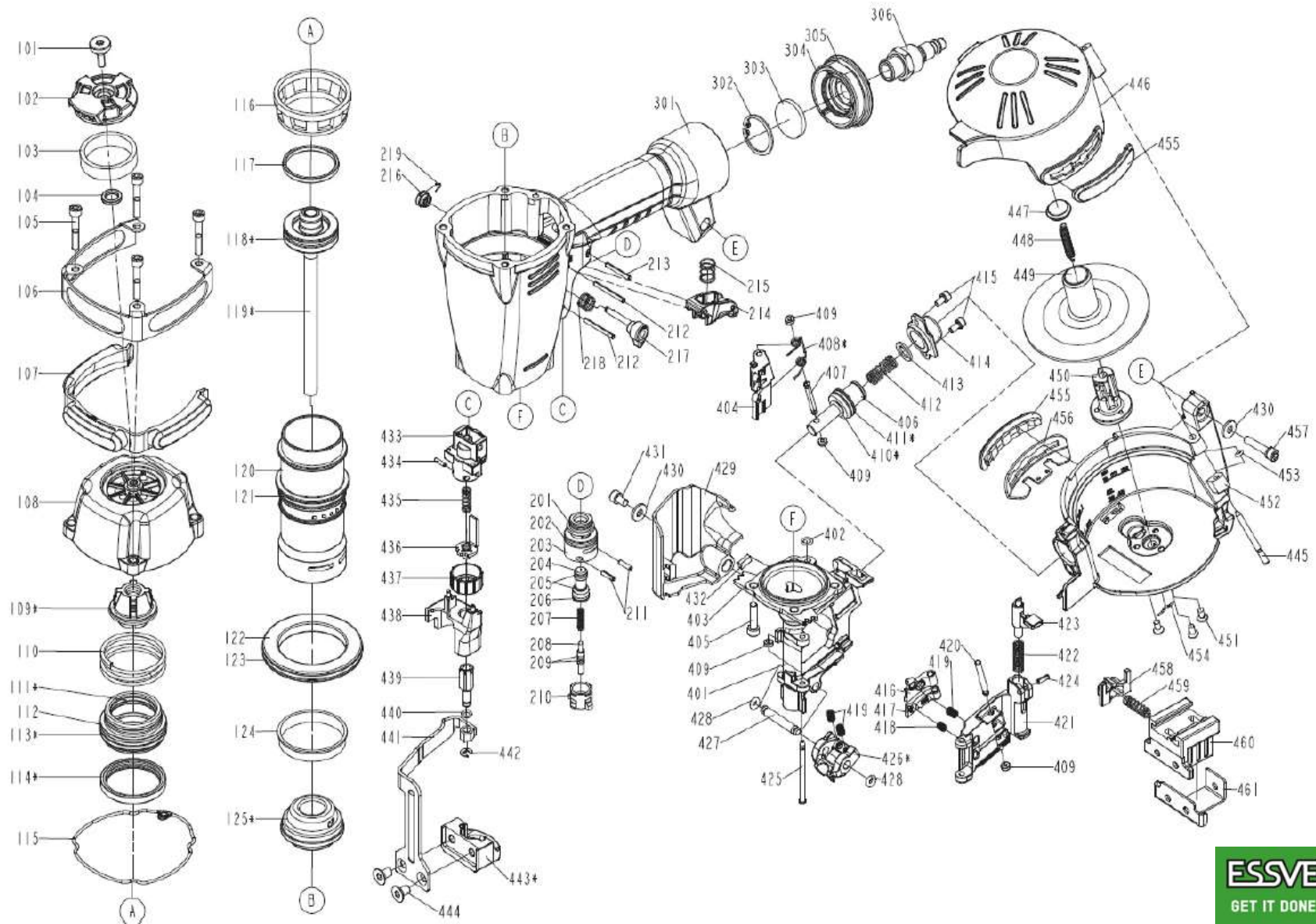


ESSVE CRN 15/45

Tool Partnr: 713035



Pos	Name	Art. Nr.	Pos	Name	Art. Nr.	Pos	Name	Art. Nr.	Service Kits	
101	DEFLECTOR BOLT(3M2353)	10000959	304	END CAP	10001097	445	PIN	10001087	Service kit	901059
102	DEFLECTOR	10000937	305	O - RING	10001067	446	MAGAZINE COVER	10001107	Feeding kit	901061
103	MUFFLER	10000866	306	AIR PLUG	10002926	447	SPRING BASE A	10001101	Adjustable support	901067
104	RUBBER PAD	10000912	401	NOSE PIECE	10004046	448	PULL SPRING	10001085	Driver kit	901063
105	HEX.SOC.HD.BOLT	10004391	402	O - RING	10004400	449	NAIL HOLDER	10001108	Door latch set	901065
106	GUIDE COVER	10001173	403	O - RING	10004401	450	MAGAEING POST	10001110	Trigger valve kit	901069
107	PROTECTIVE CUSHION	10001116	404	FEED FINGER	871742	451	TAP BOLT	10001023	Trigger Switch kit	901195
108	CAP	10004392	405	HEX.SOC.HD.BOLT	10004402	452	MAGAZINE CASE	10001105		
109	SEAL	10004416	406	FEED PISTON	10001130	453	O - RING	10001196		
110	COMPRESSION SPRING	10001118	407	PIN FEED PISTON	871744	454	BELT HOOK	10000884		
111	O - RING	10004417	408	FEED FINGER SPRING	871745	455	MAGAZINE PROTECTIVE CUSHION	10001115		
112	HD.VALVE PISTON	10001135	409	PU RETAINER	10001254	456	MAGAZINE GUIDE COVER	10001172		
113	O - RING	10004418	410	O - RING	871583	457	BOLT ASSY	10001177		
114	COLLAR, VALVE	10004419	411	O - RING	871747	458	POSITIONING SHEET	10004410		
115	PACKING	10004393	412	FEED PISTON SPRING	871748	459	SAFETY SPRING	10004411		
116	CYLINDER PRESS RING	10000848	413	FEED-BUMPER	871749	460	ADJUSTING PLATE-A	10004412		
117	PISTON RING	871115	414	FEED PISTON CAP	10001132	461	ADJUSTING PLATE-B	10004413		
118	O - RING	10004420	415	BOLT ASSY	10001176	462	PROTECTOR WASHER	10004414		
119	DRIVER UNIT	10004421	416	FIRST STOPPER FINGER	10004403	463	FIXED PIN	10004388		
120	CYLINDER	10004394	417	SECOND STOPPER FINGER	10004404	464	FIXED RING	10004389		
121	O - RING	871123	418	SPRING	871753	465	MUZZLE PROTECTOR	10004415		
122	CYLINDER SPACER	10004395	419	STOPPER FINGER SPRING	10004405					
123	O - RING	10004396	420	PIN-NAIL STOP	871755					
124	CYLINDER RING	10001080	421	DOOR	10001126					
125	BUMPER	10004422	422	LATCH SPRING	871561					
201	O - RING	871521	423	DOOR LATCH	871562					
202	O - RING	871523	424	SPRING PIN	10004406					
203	PLUNGER CAP	871522	425	DOOR SHAFT PIN	10001128					
204	VALVE PLUNGER	871525	426	GUIDE BLOCK	10001113					
205	O - RING	871524	427	FIXED PIN	10001084					
206	O - RING	871526	428	O - RING	10001198					
207	SPRING	871527	429	SAFETY COVER	10001098					
208	PLUNGER	871529	430	FLAT WASHER	2040202030100					
209	O - RING	10001061	431	HEX.SOC.HD.BOLT	10004407					
210	TRIGGER VALVE HEAD	1137300847011	432	MAGNET	10001099					
211	SPRING PIN	10001190	433	SAFETY GUIDE	10000879					
212	SPRING PIN	10001047	434	SPRING PIN	10001043					
213	SPRING PIN	10001191	435	WORK CONTACT ELEMENT PRING	10000877					
214	TRIGGER ASSY	1122403700011	436	SAFETY B	10004408					
215	SPRING	1137603700011	437	ADJUST AXIE	10004409					
216	RETAINER, SELECTION LEVER	1131M03747011	438	SAFETY COVER	10001146					
217	HINGE POINT	10004397	439	ADJUST ROD	10001165					
218	SPRING	10004313	440	O - RING	10001063					
219	RING	1131C03700011	441	SAFETY	10001088					
301	GUN BODY	10004398	442	E - RING	10001038					
302	C - RING	10001028	443	SAFETY A UNIT	10001071					
303	FILTER	10004399	444	BOLT FLAT HD HEX	10001185					

